

## MI5650 SERIES ~ Multilayer Chip Suppressions /

### High Current Chip Bead

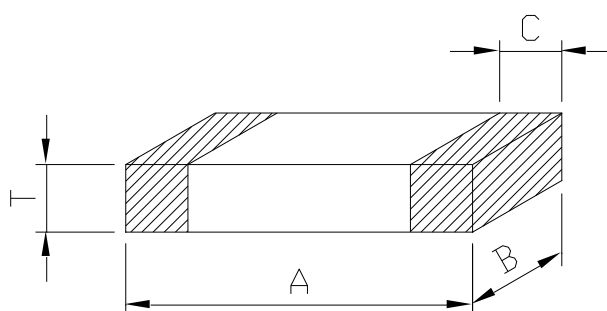


#### PART NUMBERING SYSTEM

<b>MI</b>	<b>5650</b>	-	<b>101</b>	-	<b>6A</b>	-	<b>LF</b>
TYPE	DIMENSIONS		IMPEDANCE		DC CURRENT		LEAD FREE

#### SHAPES AND DIMENSIONS

UNIT : mm



$$A=5.59\pm 0.51 \quad B=5.08\pm 0.25 \quad C=0.51\sim 1.01$$

#### SPECIFICATION TABLE

PART NUMBER	IMPEDANCE ( $\Omega$ ) at 100MHz	DCR ( $\Omega$ ) (Max.)	IDC (A) (Max.)	THICKNESS (Max.)
MI5650-171-4A-LF	170 $\pm$ 25%	0.030	4.0	1.75
MI5650-101-6A-LF	100 $\pm$ 25%	0.006	6.0	2.05
MI5650-151-5A-LF	150 $\pm$ 25%	0.015	5.0	2.05
MI5650-181-5A-LF	180 $\pm$ 25%	0.020	5.0	2.05
MI5650-251-4A-LF	250 $\pm$ 25%	0.015	4.0	2.05
MI5650-271-4A-LF	270 $\pm$ 25%	0.035	4.0	3.45
MI5650-301-5A-LF	300 $\pm$ 25%	0.030	5.0	3.45
MI5650-401-4.5A-LF	400 $\pm$ 25%	0.030	4.5	3.45

- Test equipment : Agilent/HP-4291A impedance analyzer or equipment .
- Operating temperature range -55 $^{\circ}$ C to +125 $^{\circ}$ C , Electrical specifications at 25 $^{\circ}$ C.



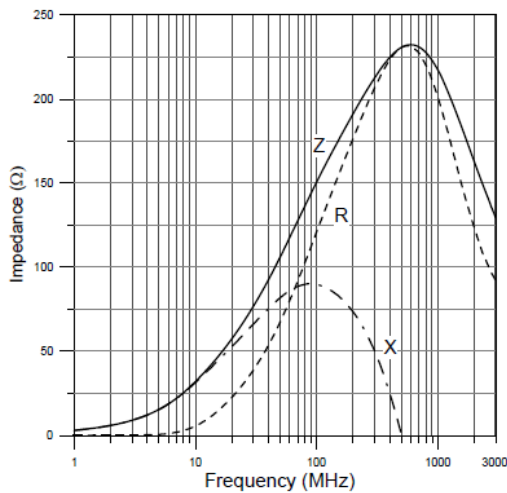
## MI5650 SERIES ~ Multilayer Chip Suppressions /

### High Current Chip Bead

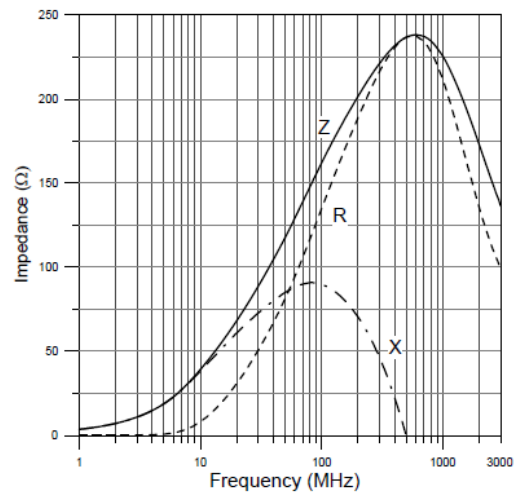


#### IMPEDANCE vs FREQUENCY

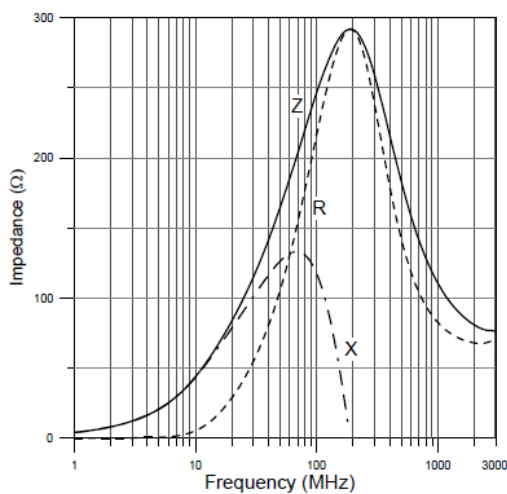
MI5650-151-5A-LF



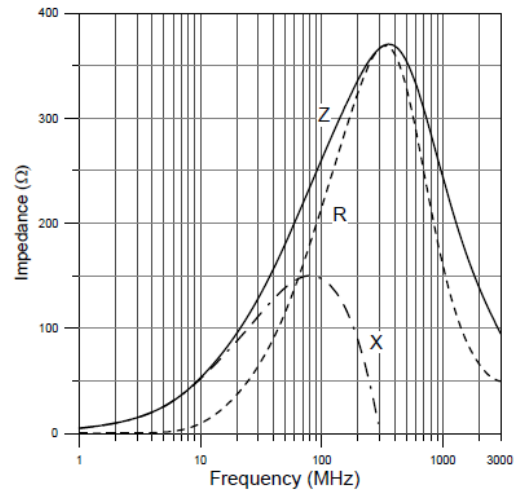
MI5650-181-5A-LF



MI5650-251-4A-LF



MI5650-271-4A-LF



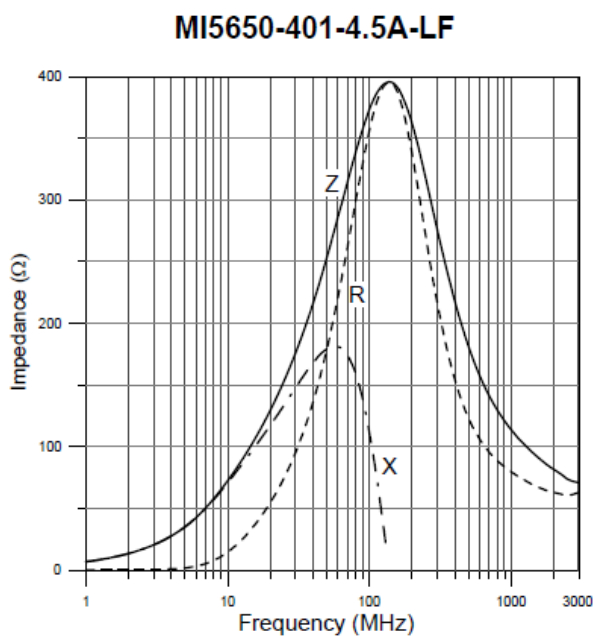


## MI5650 SERIES ~ Multilayer Chip Suppressions /

### High Current Chip Bead



#### IMPEDANCE vs FREQUENCY



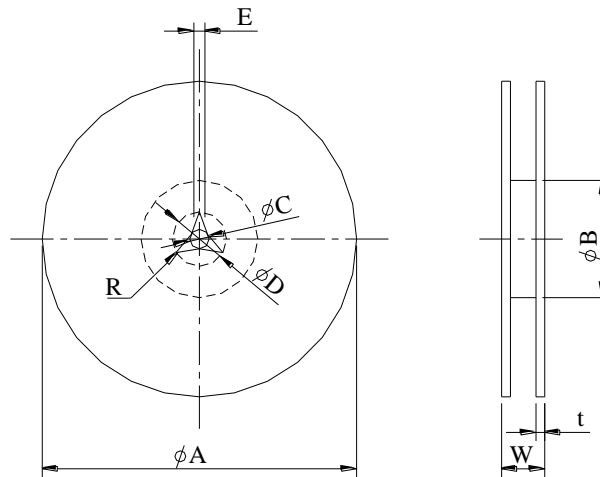


## MI5650 SERIES ~ Multilayer Chip Suppressions /

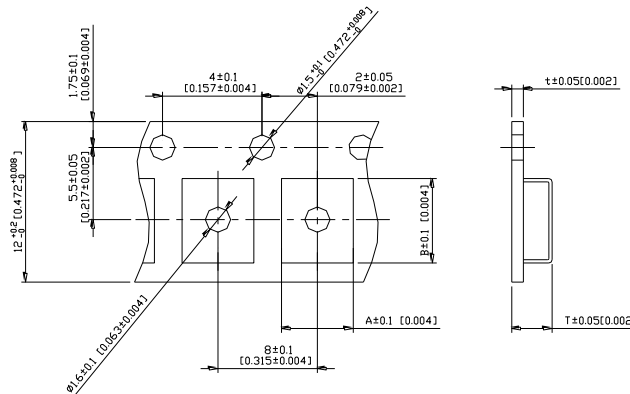
### High Current Chip Bead



#### PACKAGING SPECIFICATION



	A	B	C	D	E	W8	W12	t	R
T( $\psi 178\text{mm}$ ) Reel	$\psi 178 \pm 2$	$\psi 60 \pm 1$	$\psi 13 \pm 0.8$	$\psi 21 \pm 0.8$	2	$10 \pm 1.5$	$14.5 \pm 1.5$	$1.27 \pm 0.2$	1
T( $\psi 330\text{mm}$ ) Reel	$\psi 330 \pm 2$	$\psi 100 \pm 2$	$\psi 13 \pm 0.8$	$\psi 21 \pm 0.8$	2	$10 \pm 1.5$	$14.5 \pm 1.5$	$1.27 \pm 0.2$	1



TYPE	A	B	T	t	T( $\phi 178\text{mm}$ )	T( $\phi 330\text{mm}$ )
MI 5650	2.90	4.90	1.40	0.3	-----	2000 pcs/reel